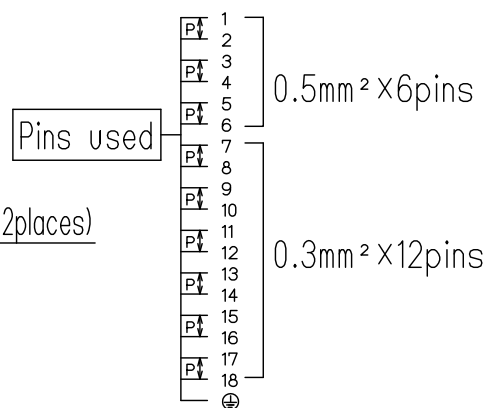
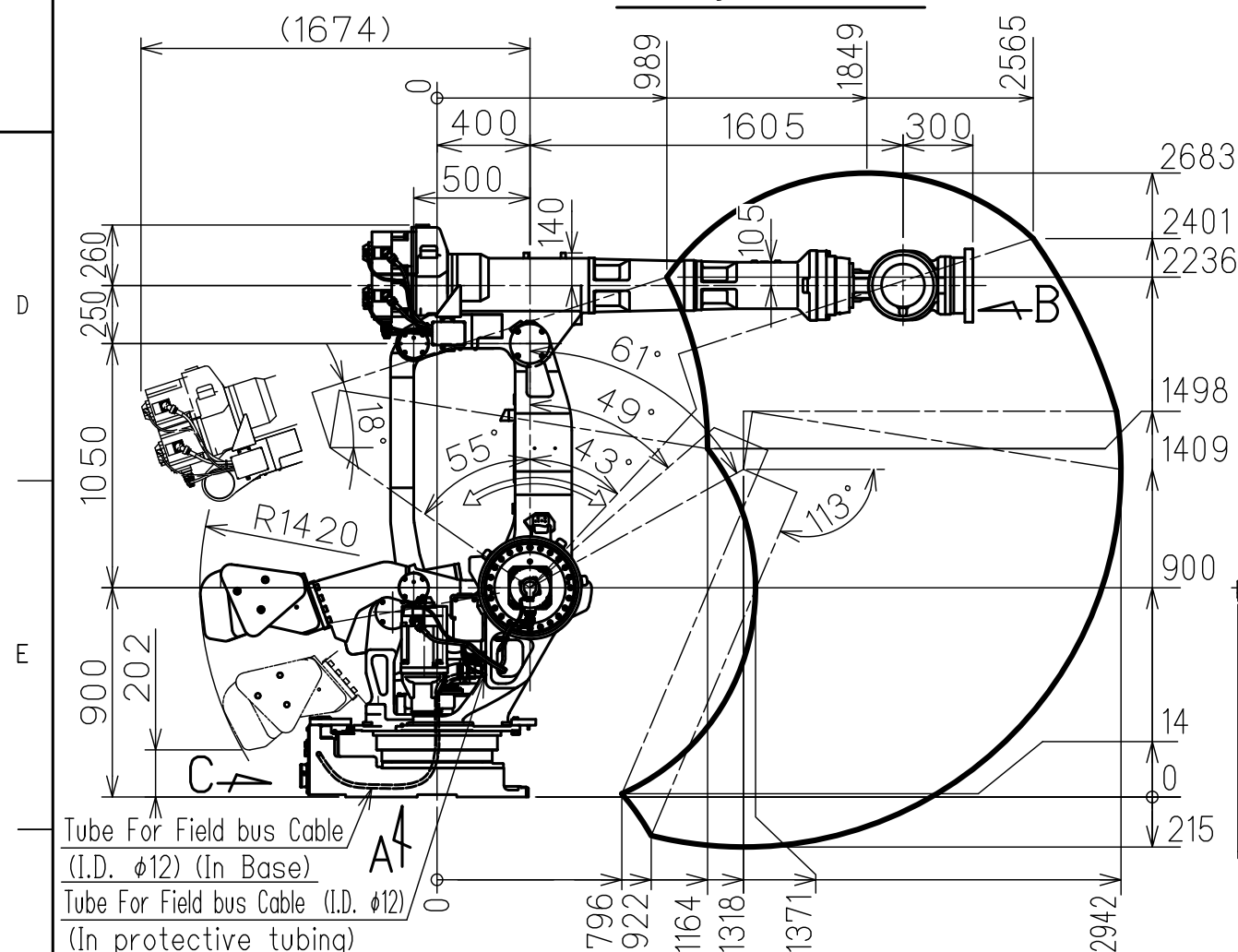
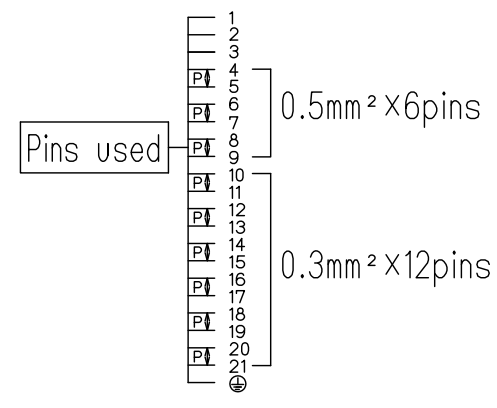


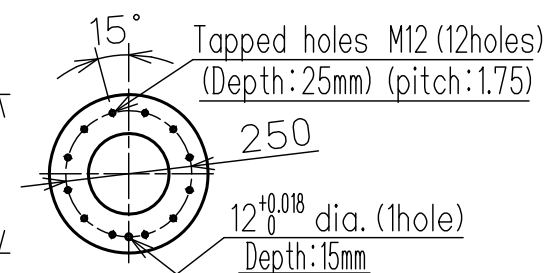
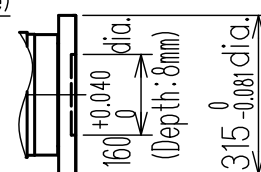
View C (Scale 1:10)



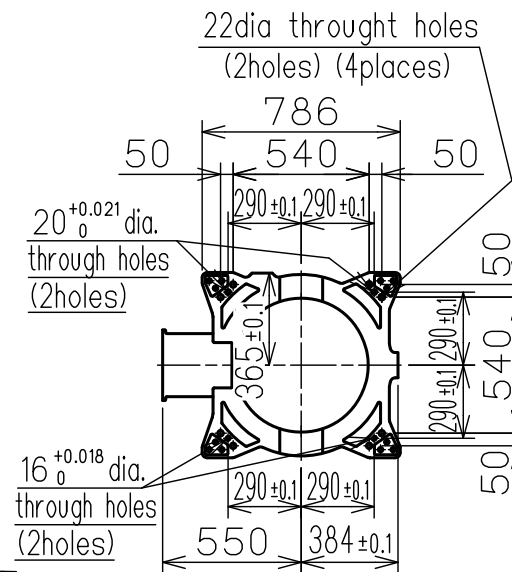
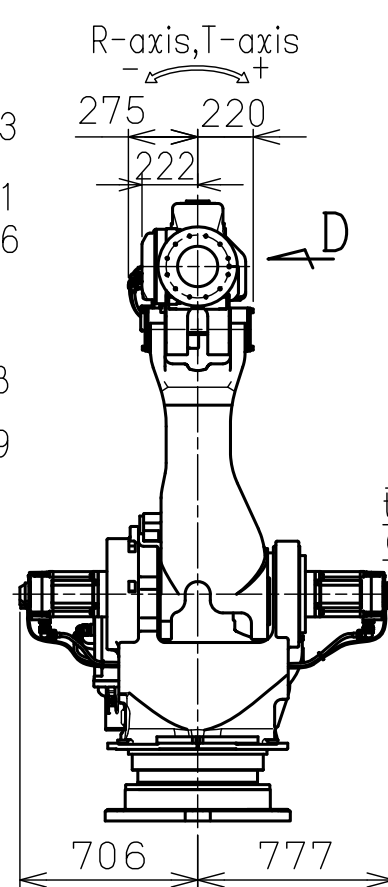
Pins details for internal user wiring harness
(Casing side)



Pins details for internal user wiring harness
(Base side)

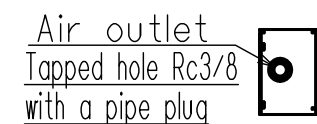


ViewB Detail of wrist frange (Scale 1:15)

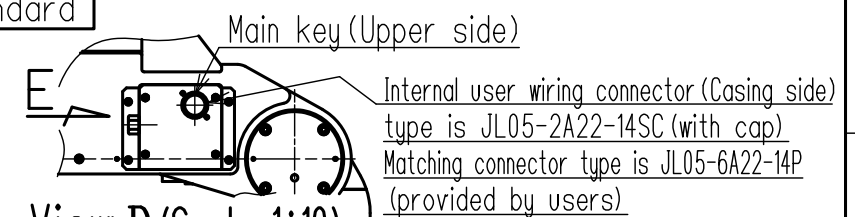


View A

Type	Note
YR-1-06VX600-A00	Standard



View E (Scale 1:10)



View D (Scale 1:10)

Item		Model	MOTOMAN-GP600
Configuration			Vertically articulated
Degree of Freedom			6
Payload	Wrist		600kg
	On U-arm		50kg
Repeatability (※1)			0.1 mm
Range of Motion	S-Axis (Turning)		-180° - +180°
	L-Axis (Lower Arm)		-55° - +61°
	U-Axis (Upper Arm)		-113° - +18°
	R-Axis (Roll)		-360° - +360°
	B-Axis (Pitch/Yaw)		-115° - +115°
	T-Axis (Twist)		-360° - +360°
Max Speed	S-Axis		1.43rad/s (82° /s)
	L-Axis		1.43rad/s (82° /s)
	U-Axis		1.43rad/s (82° /s)
	R-Axis		1.40rad/s (80° /s)
	B-Axis		1.40rad/s (80° /s)
	T-Axis		2.83rad/s (162° /s)
Allowable Moment	R-Axis		3430N・m (350kgf・m)
	B-Axis		3430N・m (350kgf・m)
	T-Axis		1764N・m (180kgf・m)
Allowable Inertia (GD ² /4)	R-Axis		520kg・m ²
	B-Axis		520kg・m ²
	T-Axis		350kg・m ²
Approx. Robot mass			3035 kg
Protected structure			Body: IP30 Wrist: IP67
Mounting method			Floor-mounted
Ambient Conditions	Temperature		0 to +45℃
	Humidity		20 to 80%RH (Non-condensing)
	Vibration		4.9m/s ² (0.5G) or less
	Altitude		1000m or less
	Others		<ul style="list-style-type: none"> • Free from explosive or corrosive gas and liquid. • Free from dust, soot, oil, or water. • Free from electrical noise. • Free from strong magnetic fields.
Power Requirements			7.0KVA
Controller			YRC1000

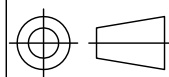
*1 Repeatability is conformed to ISO 9283.
*2 The manipulator is in the home position.

Units : mm

Note:

- 1.All rights reserved.
- 2.Please note that the data is subject to be deleted without advance notice.
- 3.No warranty is given in relation to the data including the specification.
4. We are not responsible for any damages or loss caused by the use of the data.

FOR STUDY PURPOSE ONLY



SCALE 1 : 30

YASKAWA
株式会社 安川電機

Reference Drawing

TITLE	MOTOMAN-GP600
	DIMENSION DIAGRAM

DRWN DATE	Oct.03.'17
-----------	------------

DWG.NO. HW1385406

S I Z E	A 3
---------	-----